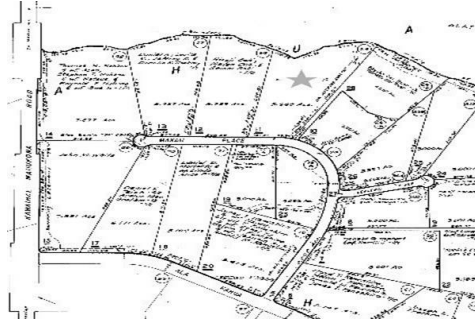


KOHALA OCEANVIEW Kapaau, HI | MLS: 602152 Active | Taxkey: **3-5-9-6-12-2** | Land



Listing Details

| | | | |
|------------------------------------|-------------------------------|---------------------------|---------------------------------|
| Price: \$305,000 | Active DOM: 51 | Sub-Type: Vacant | Land Tenure: Fee Simple |
| Subdivision: Kohala Estates | District: North Kohala | Ownership: CPR | Zoning: A - 5 A |
| Record Sys.: Regular | Disclosure Form: Yes | Land Area: 2.69 ac | Flood Zone: |
| Incr/Block: | Lot: | Roads: County | Easement: |
| Oceanfront Parcel: No | Parking: | | Sale Type: Standard Sale |

Property Details

| | | | |
|-----------------------|----------------------------------|--|-------------------------|
| Schools: | Frontage: Road/Street | View: Coastline, Mountain, Ocean, Ocean Horizon, Sunset | Ag Dedicated: No |
| Structures: No | Lot Description: Flag Lot | | |

Remarks:
Great lot with good sized acreage for sale in Kohala Estates subdivision! Great house site with coastline and beautiful ocean view! This is an Ag CPR and an ohana dwelling permit was originally acquired which allows for the building permit of a home. Stakes are in place for CPR boundaries. Map on MLS show entire 5+ acres, not the subdivided CPR's. Pins shown in picture of map are approximate boundary of division.

Utilities/Features

| | | | |
|--------------------------------------|--|---------------------------|-----------------|
| Internet Avail: DSL, Wireless | Telephone Avail: Cell, Land Line, Satellite | Water: Private | Kitchen: |
| Power: Overhead | TV Avail: Satellite | Wastewater: Septic | |

Financial Details

| | | | |
|-------------------------------|--------------------------------|--|----------------------------|
| Current Taxes: \$2,026 | Price Per Sqft: \$ 3 | Spec. Assess.: | Spec. Assess. Amt.: |
| Assessed Bldg: \$ 700 | Assessed Lnd: \$218,400 | Terms Accept.: Cash, Conventional | Exist Loan Tp: |
| Road Maint/Yr: | Monthly Assn.: | Monthly Maint.: | Other Fees: |
| CC&R's: Yes | | | |

This information has been supplied by third parties and has not been independently verified by Hawaii Information Service and is, therefore, not guaranteed.